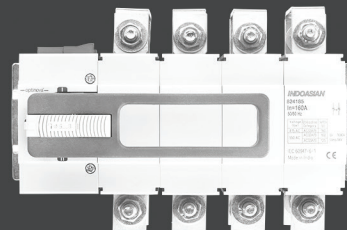


# SWITCH ON TO RELIABLE PARTNER



Introducing **All New**  
— **optinova**™ —



# SWITCH ON TO INDOASIAN

Enriching Quality Of Life Since 1958.

## Switch On To New Range Of Efficient Switch Disconnecter And Transfer Switching Equipment

### Switch Disconnectors (SDs)

It is used to isolate an element of an electrical LV network. OptiNova SDs ensures positive isolation of electrical circuit and offers a safe easy way to isolate circuits, carry out periodic maintenance & repairs.

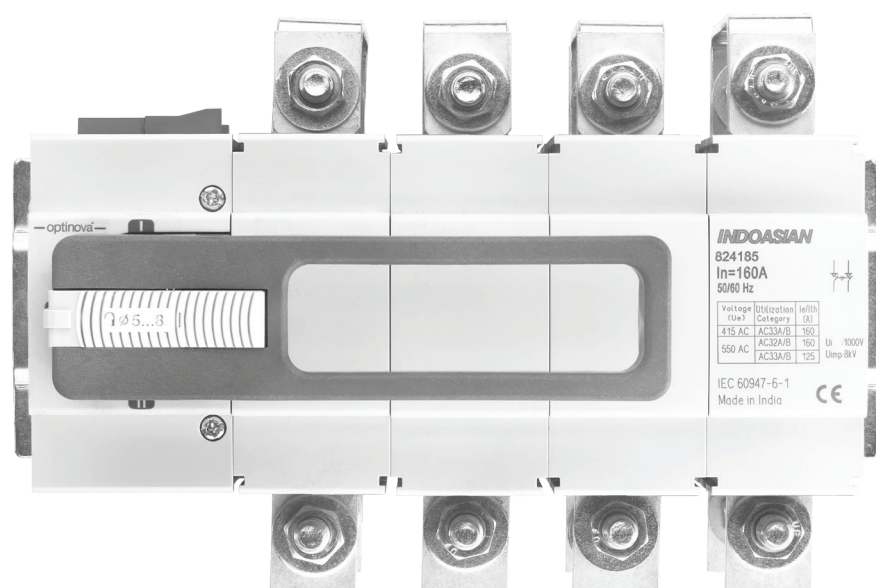


IndoAsian has always been a pioneering Indian-Origin brand that has offered high quality products. Our expertise in range of electrical power and protection applications has made us a trusted name across the globe. With relevant market insights, and team of experts, IndoAsian continuously evolve and enhance its product range that exceeds customr expectations. Customers at its centre of design philosophy, it innovates and introduces products that 'make sense' on all counts, offering maximum value to buyers which '**Makes Sense**'

Modern installations needs advance solutions. The new range of Switch Disconnectors and Transfer Switch Equipment (TSE) also popularly known as Onload Changeover - OptiNova are configured to isolate electrical networks and switching power sources to enhance network safety. These are vital components of electrical systems in buildings, industries and infra segment offering continuity of service & ensuring higher uptime.

## Transfer Switch Equipment (TSE) /Onload Changeover (OLCO)

TSE is a device that is used to select the power supply between two sources; or to totally disconnect them. They are designed to transfer electricity from the main power supply i.e source 1, to generator, UPS, captive power, back up renewable power i.e source 2 when an outage occurs. TSEs are indispensable wherever a continuous supply of electric power is required.

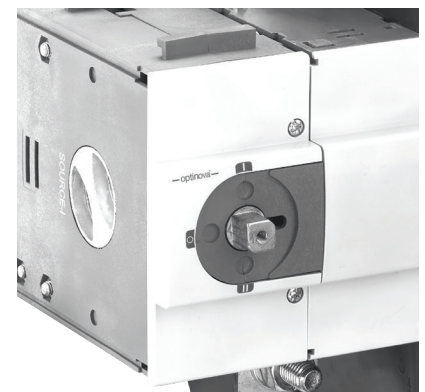


# Switch On To Innovative Design & Functional First Approach

Developing solutions for the finer needs that helps makes life easier is what we strive for.

## Clear Identification Of Mechanism Position

Window display of selection and narrow indicator on knob makes it easier to identify the position of the mechanism.



## Ergonomic Compact Design Solution

Din Mounted compact solution with enhanced termination



# Switch On For Uncompromised Safety

Safety, being one of the foremost aspect, OptiNova not only makes a safer environment but also ensures maximum uptime.

- **Padlocking, To Be Extra Safe:**

Inbuilt padlocking facility for safety during maintenance



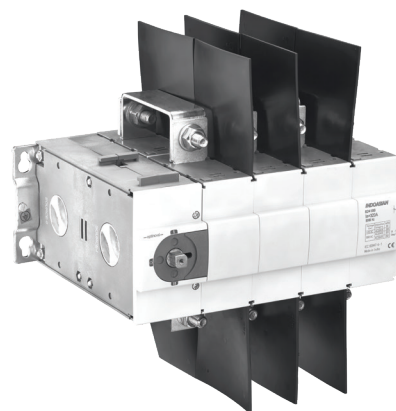
- **Insulated Shorting Links:**

Fully rated insulated copper links prevent undersized wires for shorting



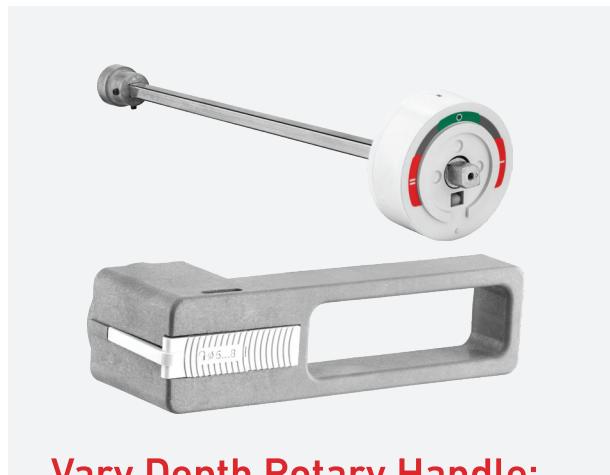
- **Add on Safety Accessories**

Phase and Intersource Barriers as add on accessories for uncompromised safety



# Switch On To Simplified Installation

Factory ready enclosures, compact and ergonomic design ensures its easy to handle, install and maintain.



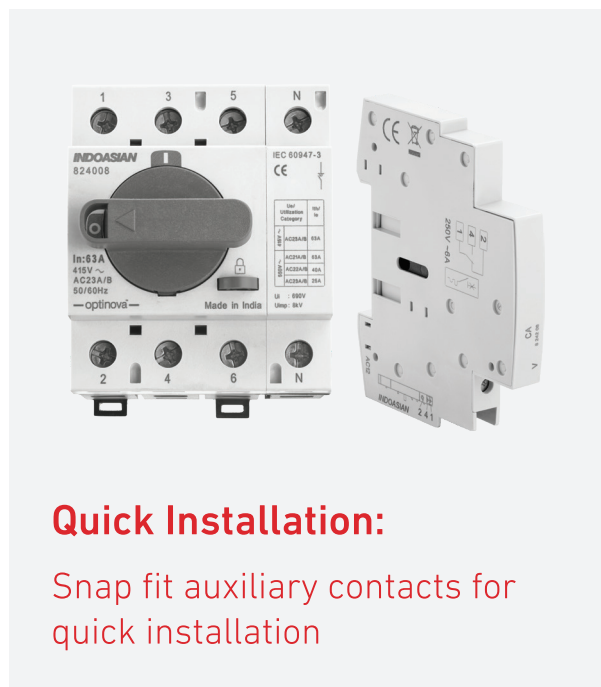
## Vary Depth Rotary Handle:

This ensures flexibility to use DIN as well as plate mounted versions to be installed in panels



## TSE/OLCO with Enclosure:

Factory assembled changeover with enclosures that are ready to install



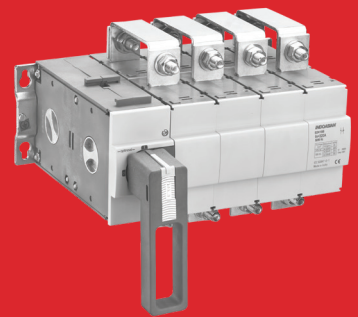
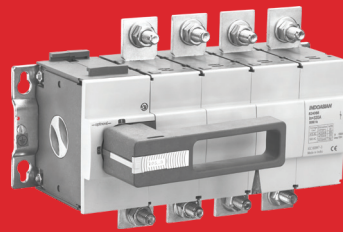
## Quick Installation:

Snap fit auxiliary contacts for quick installation

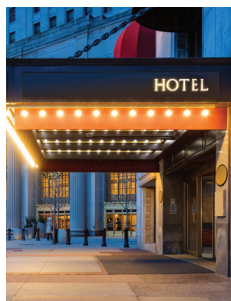
# Switch On To Robust Design.

High Short Time Withstand Capacity  
(Icw Rating)

High Electrical & Mechanical Life



## APPLICATIONS



# OptiNova Switch-Disconnectors & Transfer Switching Equipment

## Rail Mounting



Switch Disconnectors



Transfer Switching Equipment



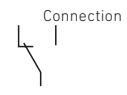
Auxiliary Contact

Switch Disconnectors & Transfer Switching Equipment Equipped With A Rotary Direct Handle.  
Front Operated Conform To IEC 60947-3 & IEC 60947-6-1

Pack	Cat.Nos	Switch-Disconnectors
		Safety switches for on-load circuit breaking by isolation of the contacts IP 20 degree of protection Internal mechanism is independent from the velocity of handle rotation Double break type load switching with self-cleaning contacts by rapid make and break movements Category of use: AC23 A/B (415 V~), Padlockable handle in open position (Ø 6 mm padlock) Accept Copper & Aluminium cables Offer Accessories : -Auxiliary Contact : Cat.No 824208 Can be equipped with up to 4 auxiliary contacts 2 contacts on each side -Vari Depth Rotary Handle : Cat No 824209 Ordering information for accessories from page 8 & 9
		<b>Frame 1 - 63 A</b> Width: 1 module per pole
	4P	
1	8 240 06	32 A   4
1	8 240 07	40 A   4
1	8 240 08	63 A   4

Pack	Cat.Nos	Transfer Switching Equipment
		IP 20 degree of protection Category of use: AC33 A/B (415 V~) Internal mechanism is independent from the velocity of handle rotation Padlockable handle in open position (Ø 6 mm padlock) Accept copper and aluminium cables Offer Accessories : - Auxiliary Contact: Cat.No 824208 Can be equipped with up to 4 auxiliary contacts 2 contacts on each side - Vari Depth Rotary Handle :Cat No 824209 - Insulated shorting link :Cat No 824201 Ordering information for accessories from page 8 & 9
		<b>Frame 1 - 63 A</b> Width: 1 module per pole
	4P	
1	8 241 06	32 A   I - 0 - II   8
1	8 241 07	40 A   I - 0 - II   8
1	8 241 08	63 A   I - 0 - II   8

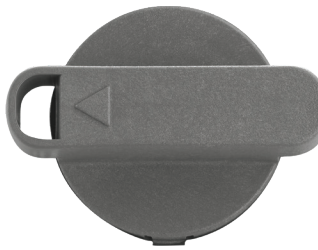
Pack	Cat.Nos	Auxiliary Contacts (NO+NC)
		For OptiNova Switch Disconnectors & Transfer Switching equipment 5 A - 230 V~ Snap-on mounting Can be mounted on both sides of the switches Maximum 4 auxiliaries per switch (2 on each side) Width: 0.5 modules
1	8 242 08	Simultaneous auxiliary Indicates the state of the contacts





## OptiNova Switch-Disconnectors & Transfer Switching Equipment

### ☐ Rail Mounting Version - Accessories



Direct Handle

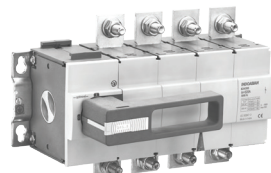


Insulated Shorting Link

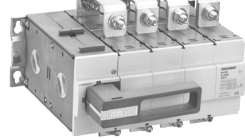
Pack	Cat.Nos	Rotary Handles
1	8 242 15	For front operation <b>Direct Handles for Switch Disconnectors</b> Standard
1	8 242 17	<b>Direct Handles for Transfer Switching Equipment</b> Standard
1	8 242 09	<b>Vari-depth Handles for Switch Disconnectors &amp; Transfer Switching Equipment</b> IP 55 external handles Comprising: connection rod, bracket, self-adhesive drilling template, mounting accessories and door lock mechanism Padlockable in open position (up to 3 padlocks Ø 8 mm) Standard
1	8 242 01	<b>Insulated Shorting Link For Transfer Switching Equipment</b> For frame 1 For 4-pole switches. Set of 4

# OptiNova Switch-Disconnectors & Transfer Switching Equipment

## Fixing On Plate



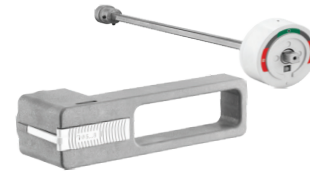
Switch Disconnector



Transfer Switching Equipment



Auxiliary Contact

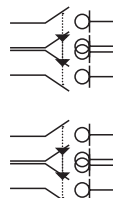
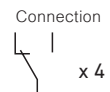


Vari Depth Rotary Handle

Switch Disconnectors & Transfer Switching Equipment To Be Equipped With A Rotary Direct or Vari-Depth Handle. Front Operated Conform to IEC 60947-3 & IEC 60947-6-1

Pack	Cat.Nos	Switch Disconnectors		
		Safety Switch Disconnectors for on-load circuit breaking by isolation and positive actions of the contacts Category of use: AC23 A/B (415 V~), Padlockable in open position (up to 3 padlocks Ø 8 mm) Connection with lugs: copper and aluminium cables Offer Accessories : - Auxiliary Contact : Cat No 824245 - Phase Barrier : Cat No 824251; 824243 Ordering information for accessories from page 10 & 11		
		<b>Frame 1 - 160 A</b>		
		In		
1	8 240 82	63 A		
1	8 240 83	100 A		
1	8 240 84	125 A		
1	8 240 85	160 A		
		<b>Frame 2 - 320 A</b>		
1	8 240 86	200 A		
1	8 240 87	250 A		
1	8 240 88	320 A		
		<b>Transfer Switching Equipment</b>		
		Safety Transfer Switching Equipment for on-load circuit breaking by isolation and positive actions of the contacts Category of use: AC33 A/B (415 V~) Padlockable in open position (up to 3 padlocks Ø 8 mm) Connection with lugs: copper and aluminium cables Offer Accessories : - Auxiliary Contact : Cat No 824245 - Phase Barrier : Cat No 824251; 824243 - Intersource Barrier: Cat No 824252; 824239 - Insulated Shorting Link : Cat No 824249, 824241 Ordering information for accessories from page 10 & 11		
		<b>Frame 1 - 160 A</b>		
		In		
		Position of the handle		
		Connection		
1	8 241 82	63 A	I - O - II	
1	8 241 83	100 A	I - O - II	
1	8 241 84	125 A	I - O - II	
1	8 241 85	160 A	I - O - II	
		<b>Frame 2 - 320 A</b>		
1	8 241 86	200 A	I - O - II	
1	8 241 87	250 A	I - O - II	
1	8 241 88	320 A	I - O - II	

Pack	Cat.Nos	Auxiliary Contacts (NO+NC)
		For OptiNova Switch Disconnectors & Transfer Switching Equipment 5 A - 230 V~ Maximum number of auxiliaries: - Switch-disconnectors: 1 simultaneous auxiliary contact - Transfer Switching Equipment: 2 simultaneous auxiliary contacts
1	8 242 45	Simultaneous auxiliary 4(NO+NC) Indicates the state of the contacts Dimensions (W x H x D): 12 x 69 x 60.5 mm
		<b>Rotary Handles</b>
		For OptiNova Switch Disconnectors & Transfer Switching Equipment For front operation Padlockable in open position (up to 3 padlocks Ø 8mm)
1	8 242 30	<b>Direct Handles</b> Standard
		<b>Vari-Depth Handles</b> IP 55 external handles Comprising: connection rod, coupler, self-adhesive drilling template, mounting accessories and door lock mechanism
1	8 242 31	Standard



## OptiNova Switch-Disconnectors & Transfer Switching Equipment

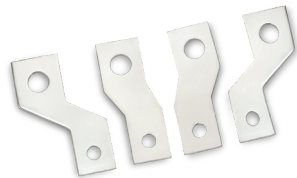
### Fixing On Plate Version - Accessories



Inter Source Barrier



Phase Barrier



Spreader

Pack	Cat.Nos	Phase Barriers
		For OptiNova Switch-Disconnectors & Transfer Switching Equipment For isolating the connections between each pole Flexible thermoplastic - PVC
1	8 242 51	<b>For frame 1</b> For 4-pole switches. Set of 6
1	8 242 43	<b>For frame 2</b> For 4-pole switches. Set of 6
		<b>Inter Source Barriers For Transfer Switching Equipment</b>
1	8 242 52	Source separators to prevent accidental contacts For frame 1
1	8 242 39	For frame 2
		<b>Spreaders</b>
		For OptiNova Switch-Disconnectors & Transfer Switching Equipment Incoming/outgoing spreaders supplied with U clamps For easier connection of copper and aluminium cables
1	8 242 54	<b>For frame 1</b> For 4-pole switches. Set of 4
1	8 242 38	<b>For frame 2</b> For 4-pole switches. Set of 4
		<b>Insulated Shorting Link for Transfer Switching Equipment</b>
1	8 242 49	<b>For frame 1</b> For 4-pole switches. Set of 4
1	8 242 41	<b>For frame 2</b> For 4-pole switches. Set of 4

# OptiNova Switch-Disconnectors

## Technical Characteristics

### Switch-Disconnectors

Performance				Din Frame			Power Frame-1				Power Frame-2		
				IndoAsian OptiNova-SD									
General	Frame	Ith	A	63			160				320		
	Rated currents			32	40	63	63	100	125	160	200	250	320
	Poles			4			4				4		
Electrical	Rated insulation voltage	Ui	V	690			1000				1000		
	Rated Impulse Withstand Voltage	Uimp	kV	8			8				12		
	Rated frequency		Hz	50/60			50/60				50/60		
	Rated operational voltage (AC)	Ue	V	550			550				550		
	Utilization category: current (A) @ rated voltage	@415V~	AC20A/B	32	40	63	63	100	125	160	200	250	320
			AC21A/B	32	40	63	63	100	125	160	200	250	320
			AC22A/B	32	40	63	63	100	125	160	200	250	320
			AC23A/B	32	40	63	63	100	125	160	200	250	320
		@550V~	AC20A/B	32	40	63	63	100	125	160	200	250	320
			AC21A/B	32	40	63	63	100	125	160	200	250	320
AC22A/B			32	40	40	63	100	125	160	200	250	320	
AC23A/B			25	25	25	63	100	125	125	200	250	250	
Short time withstand current @ rated time(s)	t(s)	Icw for 1s	1.5kA			4kA		5kA		10kA		12.5kA	
Operational	Mechanical endurance			10,000			10,000				10,000		
	Electrical endurance			1500			1000				1000		

# OptiNova Transfer Switching Equipment

## Technical Characteristics

### Transfer Switching Equipment

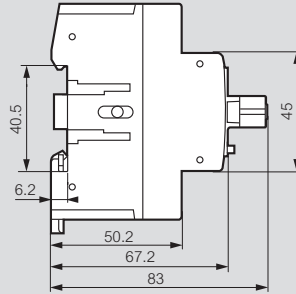
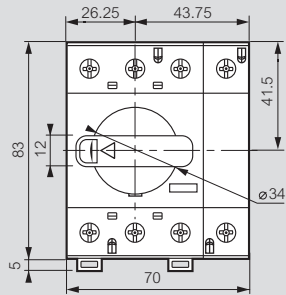
				Din Frame			Power Frame-1				Power Frame-2		
Performance				IndoAsian OptiNova-TSE									
General	Frame	lth	A	63			160				320		
	Rated currents			32	40	63	63	100	125	160	200	250	320
	Poles			4			4				4		
Electrical	Rated insulation voltage	Ui	V	690			1000				1000		
	Rated Impulse Withstand Voltage	Uimp	kV	8			8				12		
	Rated frequency		Hz	50/60			50/60				50/60		
	Rated operational voltage (AC)	Ue	V	550			550				550		
	Utilization category: current (A) @ rated voltage	@415V~	AC20A/B	32	40	63	63	100	125	160	200	250	320
			AC21A/B	32	40	63	63	100	125	160	200	250	320
			AC22A/B	32	40	63	63	100	125	160	200	250	320
			AC23A/B	32	40	63	63	100	125	160	200	250	320
		@550V~	AC20A/B	32	40	63	63	100	125	160	200	250	320
			AC21A/B	32	40	63	63	100	125	160	200	250	320
AC22A/B			32	40	40	63	100	125	160	200	250	320	
AC23A/B			25	25	25	63	100	125	125	200	250	250	
Short time withstand current @ rated time(s)	t(s)	Icw for 1s	1.5kA			4kA		5kA		10kA		12.5kA	
Operational	Mechanical endurance			10,000			10,000				10,000		
	Electrical endurance			1500			1000				1000		

## OptiNova Switch-Disconnectors & Transfer Switching Equipment

### ■ Dimensions (mm)

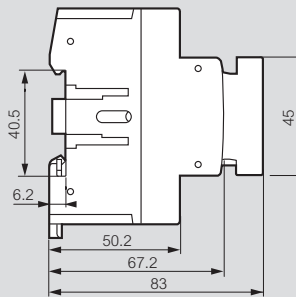
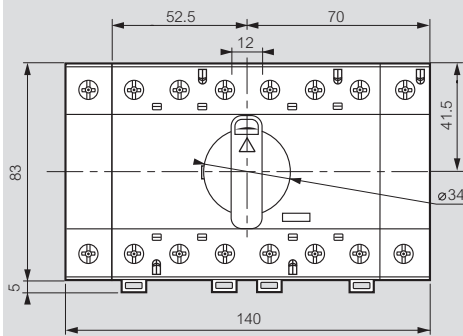
#### Switch Disconnectors

Din Frame 63A, 3-pole+N



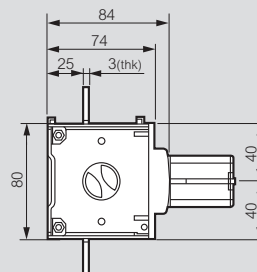
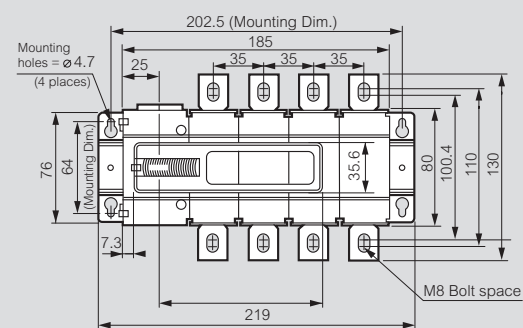
#### Transfer Switching Equipment

Din Frame 63A, 4-pole



#### Switch Disconnectors

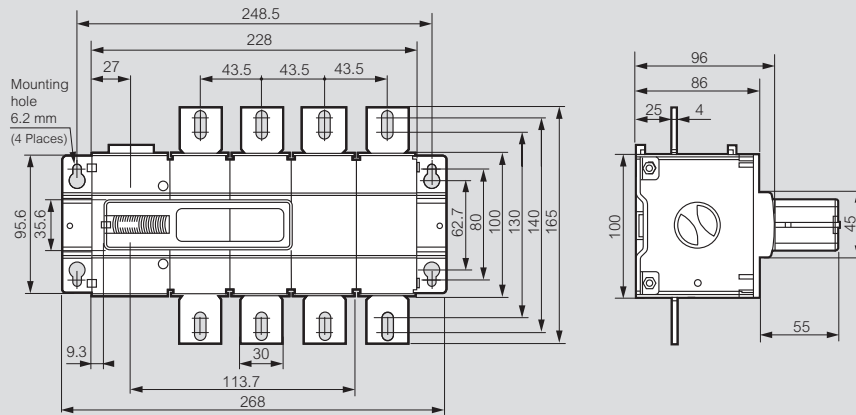
Power Frame 1 160A, 4-pole



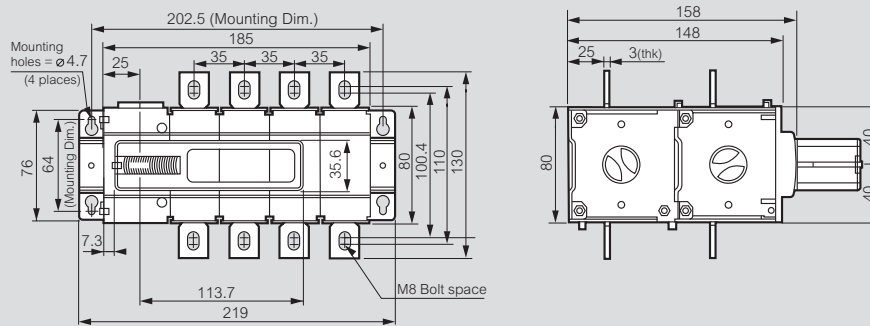
## OptiNova Switch-Disconnectors & Transfer Switching Equipment

### ■ Dimensions (mm)

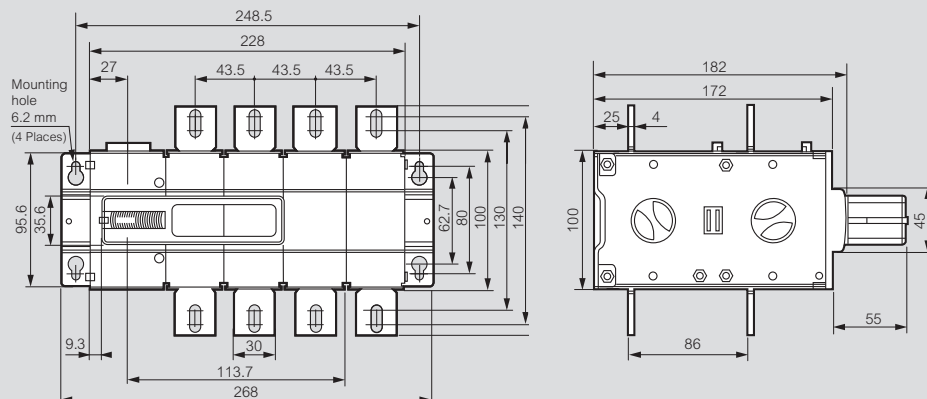
#### Switch Disconnectors Power Frame 2 320A, 4-pole



#### Transfer Switching Equipment Power Frame 1 160A, 4-pole



#### Transfer Switching Equipment Power Frame 2 320A, 4-pole

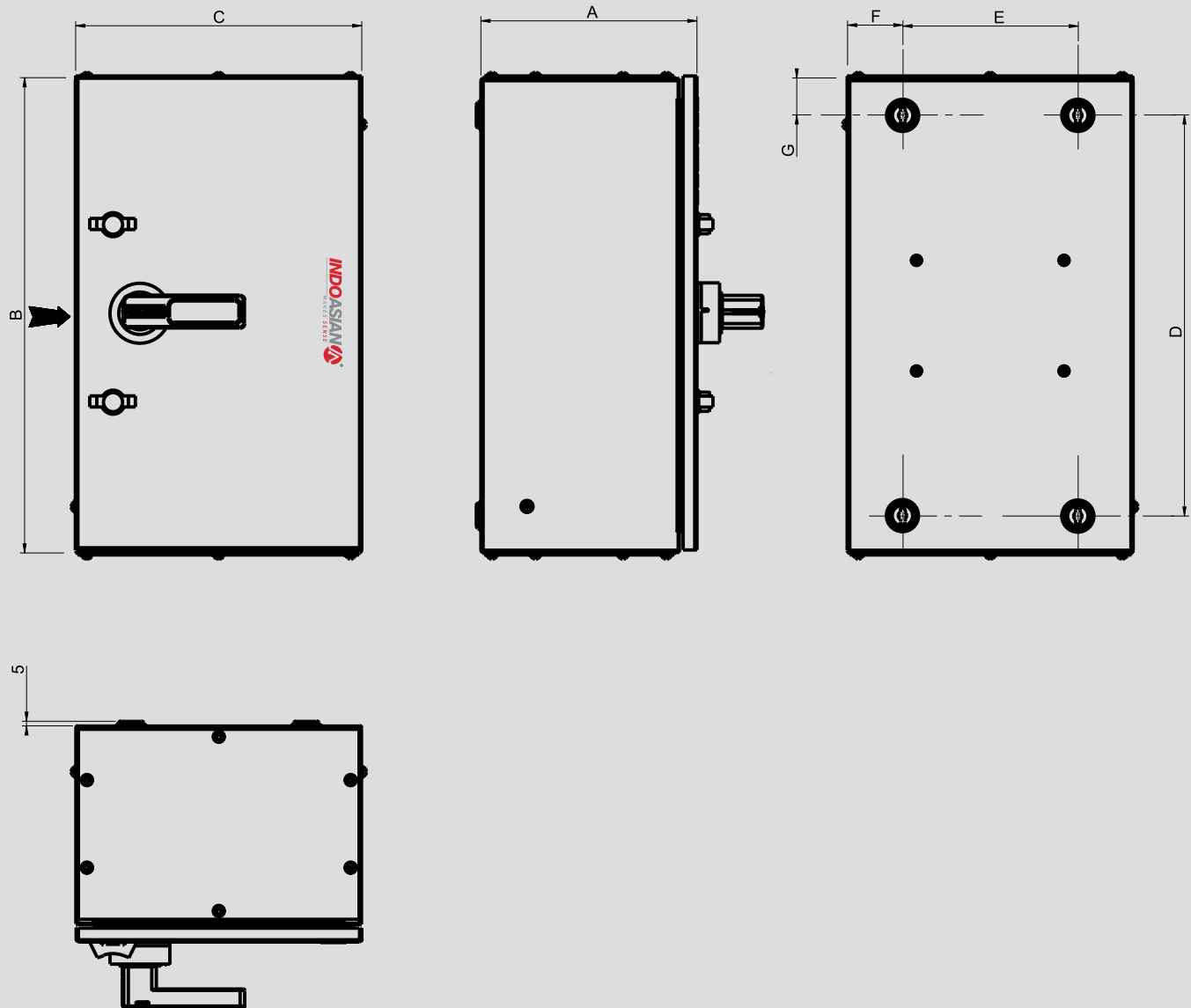


In accordance with its policy of continual improvement, the company reserves the right to modify the characteristics and design of its products without warning. All illustrations, descriptions, dimensions, and weights indicated in this catalogue are given as a guide only and the company cannot be held liable for their accuracy.

## OptiNova Transfer Switching Equipment With Enclosure

### ■ Dimensions (mm)

Transfer Switching Equipment with Enclosure



Dimensions	A	B	C	D	E	F	G
PF1 Enclosure (OptiNova 160)	234±2	520±2	310±2	434.6±0.5	190±0.5	60±0.5	40±0.5
PF2 Enclosure (OptiNova 320)	263±2	684±2	360±2	598±0.5	240±0.5	60±0.5	40±0.5



## Notes

---

---

---

---

---

---

---

---

---

---

---

---

---

---

---

---

---

---

---

---

---

---

---

---

---

---

---

---





**CORPORATE OFFICE:**

V. J. Business Towers, A-6, 1st Floor, Sector-125, Noida-201301, U. P., India.

Ph.: +91-120-3305100 E-mail: [Customer.care@indoasian.com](mailto:Customer.care@indoasian.com) Website: [www.indoasian.com](http://www.indoasian.com)

**NORTH**

**Regional Sales office**

**DELHI NCR**

V. J. Business Towers,  
A-6, Ground Floor,  
Sector-125, Noida-201301  
Ph.: 0120-6858900

**Branch offices**

**CHANDIGARH**

S.C.O.-11, 2<sup>nd</sup> Floor,  
Sector-26, Madhya Marg,  
Chandigarh-160002  
Ph.: 0172-3934651

**Branch offices**

**JAIPUR**

433, 4<sup>th</sup> Floor, Ganpati Plaza,  
M. I. Road,  
Jaipur-302001  
Ph.: 0141-4113528

**Branch offices**

**LUCKNOW**

301, 3<sup>rd</sup> Floor, Chintel House,  
Station Road,  
Lucknow-226001  
Ph.: 0522-4013210

**SOUTH**

**Regional Sales office**

**BANGLORE**

787, 1<sup>st</sup> Floor "Skyline Vista",  
15<sup>th</sup> Cross, 100 Feet Ring Road  
J P Nagar 1<sup>st</sup> Phase  
Bangalore-560 078  
Tel: 080-46219999

**Branch offices**

**COCHIN**

Door No.65/1317, Syda Building,  
2<sup>nd</sup> Floor, Kaloor-Kadavanthra Road,  
Kaloor, Ernakulam District,  
Kochi-682017 (Kerala)  
Ph.: 0484-4055581-88

**Branch offices**

**COIMBATORE**

Door No. 83,  
Dr. Nanjappa Road,  
Coimbatore-641018  
Ph.: 0422-2302715

**Branch offices**

**CHENNAI**

No.5, 1<sup>st</sup> Floor, Mahalingapuram Main Road,  
Nungambakkam,  
Chennai-600034  
Ph.: 044-28172096, 28170527

**Branch offices**

**HYDERABAD**

312, 3<sup>rd</sup> Floor,  
Amrutha Estates, Himayath Nagar,  
Hyderabad-500029  
Ph.: 040-66742425

**WEST**

**Regional Sales office**

**MUMBAI**

401 & 408, K.P. Arrum,  
Marol Morshi Road, Andheri East,  
Mumbai-400059  
Ph.: 022-61035800

**Branch offices**

**AHMEDABAD**

102, 1<sup>st</sup> Floor, Shivalik High Street,  
Near Mansi Circle, Vastrapur,  
Ahmedabad-380015  
Ph.: 079-29701351-53

**Branch offices**

**INDORE**

202, KK Bafna Arcade,  
Janjeerwala Square, Race Course Road,  
Indore-452001  
Ph.: 0731-4064064

**Branch offices**

**PUNE**

311, Pride Silicon Plaza,  
Bhamburda Senapati Bapat Marg,  
Shivaji Nagar, Near Chaturshringi Temple,  
Pune - 411 016  
Ph.: 8087610722

**EAST**

**Regional Sales office**

**KOLKATA**

Raikva Building, Room No. 8, 2<sup>nd</sup> Floor,  
3A Ram Mohan Garden Lane,  
Beliaghata E.M.Bypass,  
Kolkata-700010  
Ph.: 033-66041503

**CUSTOMER SUPPORT EXECUTIVE:**

V. J. Business Towers, A-6, 1st Floor, Sector-125, Noida-201301, U. P., India.

Ph.: 1800 103 7077 E-mail: [Customer.care@indoasian.com](mailto:Customer.care@indoasian.com)